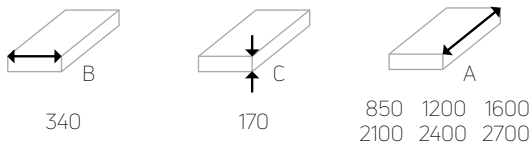


Trench convector F4C

Model **F4C** is the **most advanced** type of trench convector which we offer. Its heat exchanger has been designed for **heating and cooling**. This is possible thanks to our **four pipe system**, two pipes for heating and two pipes for cooling. Convector works on the basis of forced convection which is provided by **24 V tangential fan**. Mostly it is used as **main source of heat**.

dimension (in mm)



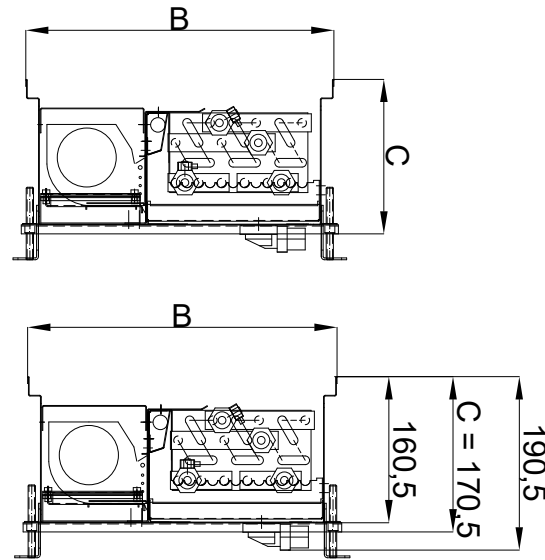
material of the duct



*special stainless steel AISI 316L for pool version upon request
**duct from galvanized steel has condensate tray from stainless steel

material of the heat exchanger

Heat exchanger is made from copper pipes and aluminium lamellas **varnished in RAL9005**. The diameter of the pipes is 9,5 mm with 0,3 mm of thickness. Endings are with 1/2" connections.



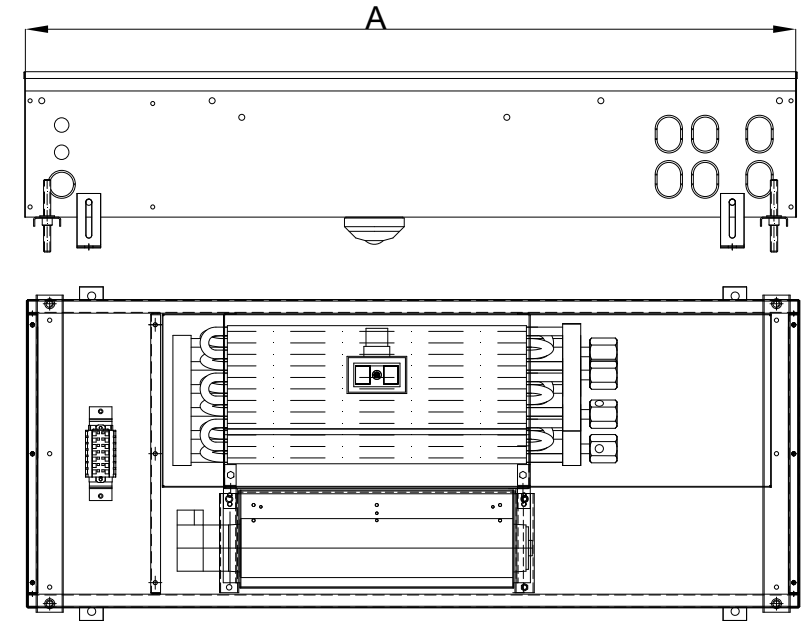
electricity connection

Fans work with **24 V EC** and are **controlled by 0-10 V**, compatible with **BMS**. To connect the convector, you need a 24 V transformer and a 24 V thermostat with the possibility of 0-10 V control. Space for electricity connection is covered by covering plate. In case of **pool version** all electrical connections are isolated in the watter resistant electrical box. Water connection and electrical connection are separated from each other.

technical data

Easy connection of 2 and more convectors together, max. operating pressure 10 bar, manual air vent, possible installation to double floor (upon the request), air inlets for external source of air can be installed (upon the request), tested in accordance with **DIN EN 442**.

	control voltage [V]	heat output [W] 75/65/20°C			cooling output [W] 16/18/27°C			sound power level dB(A)			power consumption [W]												
		3	6	9	3	6	9	3	6	9													
length A	[mm]	850	1200	1600	2100	2400	2700	21	22	23	25	26	27	28	29	30	32	34	36	39	41	42	44
		524	1049	1558	2221	2715	3255	117	235	349	497	608	729	21	22	23	25	26	28	30	33	35	36
		932	1865	2770	3949	4826	5786	209	418	620	884	1080	1295	26	28	30	33	34	36	39	41	42	44
		1165	2331	3462	4936	6033	7233	261	522	775	1105	1350	1619	26	28	30	33	34	36	39	41	42	44
		235	349	497	608	729		21	22	23	25	26	27	21	22	23	25	26	28	30	33	35	36
		620	884	1105	1350	1619		22	23	25	26	27	21	22	23	25	26	28	30	33	35	36	36



water connection

Right and left connection is possible, needs to be specified. In standard there is a **bottom drainage** for condensation water, **side drainage** is possible upon the request. In case of bottom drainage additional 2 cm need to be added to the height. Standard drainage set is part of the delivery. Space for water connection is covered by covering plate. Water pipes could be connected either from the front side or longitudinal side.

standard delivery accessories

Height adjustment feet, raised floor height adjustment feet, rubber grommets for pre-punched connection openings, flexible stainless steel hoses with seals, drainage set, chipboard cover (protection from the dust etc. during the construction work), struts (protection from deformation while pouring concrete floor).